

Our Church School

St. Andrew's Church
Weaverthorpe

The collective worship theme
this term is: 'Journey's' linked to
our school Vision & Values'



Friends of Weaverthorpe School

Friend's Of Weaverthorpe School have a marquee 8m x4m
and a stage 4 x 2m for hire £35 per day (including erecting
and taking down time) For all those outdoor garden parties
and event's. Hirer to collect & return.

For further details contact;
Jill - 07800806459

Friend's Of Weaverthorpe School
Are holding a Ladies Lunch Fundraiser at
The Blue Bell

16th July £12 per ticket 12/12.30pm

Numbers will be limited, so please book ASAP to avoid disap-
pointment

Dust off that summer dress and come and have some fun!

There will be a raffle, with some fantastic prizes,
if you would like to purchase tickets they are £1 per ticket

Please contact; Jill 07800806459

We would like to thank in advance Karl and Julia for hosting
this event!

Bags2school

We collected 540kg for
bags2school raising £162!
A big thank you for every-
one's help in making it a
success!!
'Friends of Weaverthorpe
School'



Newsletter Dates

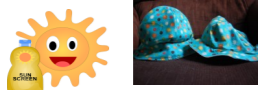
2021 - Friday

- 23rd July
- 24th Sept
- 22nd Oct
- 26th Nov
- 17th Dec



Sun Safety

Just a quick reminder,
(hoping that we get a bit
more sun) the children can
bring into school a named
tub of sunscreen so they can
apply this themselves and
also please can we ask that
they all have a hat for when
they are outside.
Thank you



Social Distancing & Face Masks

Please can we remind par-
ents when you are all in the
playground to keep 2 meters
apart and wear your face
mask, when dropping off your
children and collecting them
at the start and end of the
school day .
Thank you



Friends of Weaverthorpe School

WE NEED YOUR HELP! If you shop online, please could
you sign up to easyfundraising to support Friends of Weav-
erthorpe School?

It's a really easy way to raise money for us – you just use the
easyfundraising site to shop online with more than 3,300 well
known online stores like Amazon, Argos, John Lewis, ASOS,
Booking.com, eBay, Boden, and M&S and when you make a
purchase, the retailer sends us a free donation, at no extra
cost to you.

We want to raise as much as possible, so please visit our
new easyfundraising page at [https://
www.easyfundraising.org.uk/causes/
friendsofweaverthorpeschool/](https://www.easyfundraising.org.uk/causes/friendsofweaverthorpeschool/) and click 'support us'.

Thank you!



See below a link for your computer and one for your mobile
phone to log onto Parent View and give your views by com-
pleting the short questionnaire about the school. Your views
are helpful to Governors and staff to aid the development of
the school.

Thank you

Mobile: <https://mobile.parentview.ofsted.gov.uk/login>

Computer: <https://parentview.ofsted.gov.uk/>

Governors of Weaverthorpe CE (VC) Primary School

Chair of Governors	Mrs Anne Conroy
Local Authority/IEB	Rev Andy Bowden
Local Authority/IEB	Mrs Anne Conroy
Local Authority/IEB	Mr Howard Widdall
Local Authority/IEB	Mrs Carolyn Childs
Local Authority/IEB	Ms Alison Smith
Local Authority/IEB	Mrs Elizabeth Dyer

Headteacher

Mrs Rachel Ray

The Governing Board of Weaverthorpe School would like to
remind all parents and carers that we are happy to arrange a
meeting to discuss any particular topic either on a one to one
basis or as a group with the head teacher and/or members of
the governing body. If this is required please speak to Mrs
Mitchell in the School Office so that appointments can be
made.

Weaverthorpe CE(VC) Primary School
Weaverthorpe, Malton, N Yorkshire, YO17 8ES
01944 738280
E-mail: admin@weaverthorpe.n-yorks.sch.uk
Head Teacher: Mrs Rachel Ray



Friday 25th June 2021

Head Teacher's Message

Dear Parents

We have certainly had a busy start to the half
term with a two day visit with three inspectors on
the second and third day! We were able to
demonstrate the improvements we have made
and I will be able to share the report with you next
week. We have also been delighted to welcome
Mrs Bowman to the team too. We are all excited
about the upcoming events in the run up to the
end of term. Our oldest children are going for a
day to Wykeham Lakes, and we have some spe-
cial reptile visitors joining us on Monday 12th July
too! We will be celebrating the end of term with a
bouncy castle on Thursday 22nd July. We are
very grateful to 'Friends' for helping us towards
the costs of these events.

Covid restrictions lifting on Monday 19th July per-
mitting, we hope to hold our end of term service
in the church on Wednesday 21st July to which
all parents are invited.

Very Best Wishes
Mrs Rachel Ray

Swimming Silver Birch Class

The children in Silver Birch
Class will be going swimming
on a Thursday morning from
16th September for 10
weeks. They will be travel-
ling to Pickering Pool by
Fletcher's coaches and be
accompanied by Mrs Laud
and Miss Sim.

Please see letter attached



After School Club

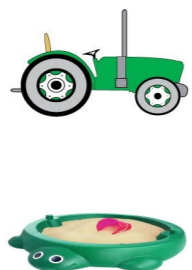
The After school club is
proving to be very success-
ful. This will be continuing in
September, but we will be
asking for a small charge of
£2 per session. We do hope
it will be as popular in Sep-
tember as it is now.



WEAVERTHORPE PRIMARY SCHOOL

NURSERY

Is your child 3 years old this year? Were they born between 1st Sept- 31st August



Excellent Facilities
15 hours FREE childcare per week
Contact school
01944 738280



Places available when you child is 3 years old

15 hours care - free per week. Mornings only. 8.45am to 12noon

Child's Birthday	Come to nursery
1 st January – 31 st March	Beginning of term on or after 1 st April
1 st April – 31 st August	Beginning of term on or after 1 st September
1 st September – 31 st December	Beginning of term on or after 1 st January

Let your child stay for a hot meal, collect them at 1pm. Lunch £1.90 Care (12noon to 1pm) £2.00

Diary Dates

June

- 29th - Sports Day

July

- 21st - Leavers Collective Worship @ Church
- 23th - Break up

Sept

- 6th - Training Day
- 7th - School Begins

Marquee and Stage Hire

We have a Marquee 8mx 4m and a Stage 4 x 2m for hire £35 per day (including erecting and taking down time) Hirer to collect and return. Any bookings or queries please contact Maisie on 07842 619341.

Many thanks for your continued support Friends of Weaverthorpe School. Thanks you

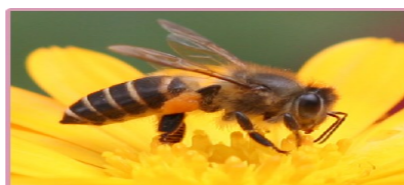
Weebles

Weebles enjoyed Father's Day crafting on the Green (thank you to The Blue Bell for the loan of their picnic benches) Meet 9.15 - 11am on Weaverthorpe Green, if we have a trip planned we will meet there first.
28th June - Trip to Weaverthorpe dolls house miniatures.
5th July - Library van
12th July - Weebles Sports Day
19th July - Summer Trip TBC
Enjoy your Summer Break!
For more details contact Jill; 07800806459



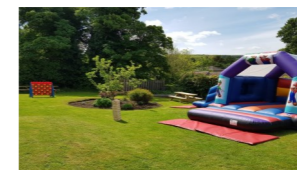
Radio 2 Big Bee Challenge

Radio 2 are doing a Big Bee Challenge, if you would like to design a garden that will attract bees then copy and paste the link below into your web browser and have a look to see how to enter.
<https://www.bbc.co.uk/programmes/articles/2qk4dDdJJdsVFmcLhZ7RwmW/how-to-enter>



Bouncy Castle

We will be having a bouncy castle in school on the 22nd July for the whole day. This will be a fun day for all the children after a very busy year. Mrs Sterker will be doing a picnic lunch on this day too, so hopefully we will be able to sit outside. All we need is fine weather!



Bikeability Year 5 & 6

On Tuesday 20th July, Year 5 & 6 children will be participating in the Bikeability course. We will be asking you to bring in their bicycles for this day. Please can you make sure the bicycles are roadworthy and your child has a helmet. Please see letter attached from the Bikeability Team.



Fridge

Has anyone got a small fridge they would like to donate to school, that is in good working order. Please contact Mrs Mitchell. Thank you



Attachments

- ◆ Term Dates
- ◆ Swimming letter Silver Birch
- ◆ Bikeability Y6 & 5
- ◆ Menu for Autumn Term



Leavers Service

We will be having a leavers service at the church on 21st July @ 2pm. We would like to invite all parents to join us on this special day.



Collection for Mrs Stockill

As you will all know, Mrs Stockill is leaving us at the end of this school year. She has been an amazing teacher especially her music in her time with the school, we will miss her very much. If anyone would like to contribute to Mrs Stockill's leaving gift, please can this be brought into the office by 9th July 21. Thank you.



Reptiles

On Monday 12th July we will be having a visit from the Reptile Company. They will be coming into school with lots of different reptiles for the children to see. Please can we ask for a £2 contribution towards this visit. 'Friends' have very kindly said they will pay the difference of this visit. Thank you

Raring2go

Please see below the raring2go link for the magazine

<https://magazines.raring2go.co.uk/yorkshirecoast/summer/>