



Weaverthorpe CE (VC) Primary School
 Weaverthorpe
 Malton
 North Yorkshire
 YO17 8ES
 Telephone: 01944 738280
 E-mail: admin@weaverthorpe.n-yorks.sch.uk
 Head Teacher: Miss J Wilkinson B.Ed. (Hons)



NEWSLETTER

MARCH 2016

Diary Dates from March 2016 to July 2016

2016

March

Thursday 10th

Friday 11th

Wednesday 16th

Thursday 17th

Friday 18th

Tuesday 22nd

Wednesday 23rd

Thursday 24th

Saturday 26th

April

Monday 11th

Tuesday 12th

Thursday 14th

Thursday 21st

Thursday 28th

Friday 29th

May

Monday 2nd

Thursday 5th

Monday 9th – Friday 13th

Swimming Starts for Y1 to Y4 for 10 weeks 1 of 1
Easter Experience, Hope Central Y1 to Y6 - am

Parents' Evening

Swimming 2 of 10

Silver Birch Celebration Worship @ 9am

Easter Crafts Afternoon

Sycamore Class – Coffee and games morning 10.30am
 – 11.30am – for invited members of the community

Non-Uniform Day – Bring a tombola prize.

Swimming 3 of 10

Easter Service @ 2pm

End of term

Easter Egg Hunt @ School 12-2pm

Teacher Training Day

School Starts for the children

Swimming 4 of 10

Swimming 5 of 10

Swimming 6 of 10

Sycamore Class Celebration Worship @ 9am

MAY DAY

MAY KS1 SATS

Swimming 7 of 10

KS2 SATS WEEK

Diary Dates from December 2015 to July 2016 continued

2016

May

Thursday 12th

Tuesday 17th

Thursday 19th

Monday 23rd – Friday 27th

Thursday 26th

Friday 27th

Swimming 8 of 10

Y5 Taster Day – Norton College

Swimming 9 of 10

“Values Week”

Last Swimming for Y1 to Y4

Last Day



June

Monday 6th

School Starts

July

Friday 1st

Friday 8th

Wednesday 13th

Friday 15th

Friday 22nd

Silver Birch Class Celebration Worship @ 9am

Reports to Parents

Parents' Evening

Sports Day

Leavers' Service @ Church 9.30pm

Last Day

Parking

Please do not use the staff car park unless you have spoken to me first.

We (and the neighbours) need access for staff, delivery vehicles and a school taxi and at all times.

This includes dropping of/picking up in the morning, lunchtime and afternoon. We often have delivery and post before school and during lunchtime. I have noticed that it can be quite chaotic at home time.

Thank you

Mrs Scrase

Mrs Scrase will be leaving us on Friday 4th March. We would like to thank her for all her help at Lunchtime over the last few years. We wish her well for the future. Thank you.

School Council

The School Council are in the proceeds of planning the next healthy school day.



Parents' Evening

It is Parents' Evening on the Wednesday 16th March. Please find attached to this newsletter your letter to complete for your appointment with your child's class teacher.

Thank you

Magic Maths

Look out for the new 'Magic Maths' newsletter. It will be full of information ideas and activities. It is a paper issue since after the questionnaire most parents said they preferred this type of literature as a paper copy. Hopefully this will be a termly newsletter.

Friends of Weaverthorpe School

Friends are still collecting 'Stamps'. If you have any please bring them into the office and they will collect them from there.

Thank you

Easter Egg Hunt And Spring Fair

Saturday 26th March 2016

Tomboa, BBQ, Craft stalls

12 noon – 2pm

In

School Portacabin.

Entry fee to Easter Egg Hunt £1.50

Prize for everyone who enters

All Welcome

Mother's Day Raffle

Please support the 'Friends of Weaverthorpe School' by buying a raffle ticket for their 'Mother's Day Raffle'.

Tickets cost £1.00 each and all funds will go directly to Weaverthorpe Primary School.

1st Prize – A 'Pamper Hamper' with a retail value of over £150.00 (Kindly donated by Avon Representative Joanne Stones)

2nd Prize – A Magnum of Prosecco (Kindly donated by Express Coach Repairs Tool and Plant Hire, Pickering)

3rd Prize – A pedicure Set (Kindly donated by Avon Representative Joanne Stones)

The raffle will be drawn on Friday 4th March, 3.30pm at Weaverthorpe Primary School

Tickets available at School and Bannisters Farm Shop.

Thank you

Friends of Weaverthorpe School

Did you know that whenever you buy anything online - from your weekly shop to your annual holiday - you could be raising a free donation for Friends of Weaverthorpe School? There are nearly 3,000 retailers including Amazon, John Lewis, Aviva, thetrainline and Sainsbury's, who will donate a percentage of the amount you spend to Friends of Weaverthorpe School to say thank you for shopping with them.

It's really simple, and doesn't cost you anything.

All you have to do is:

1. Go to

<http://www.easyfundraising.org.uk/causes/friendsofweaverthorpeschool>

2. Sign up for free

3. Get shopping - your donations will be collected by easyfundraising and automatically sent to Friends of Weaverthorpe School. It couldn't be easier!

There are no catches or hidden charges and Friends of Weaverthorpe School will be really grateful for your donations.

Thank you for your support.

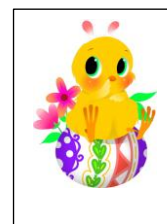
**Weaverthorpe Weebles**

Come, have a play and a cuppa.

March 7th – Easter craft

March 14th – Easter craft

March 21st – Easter hunt

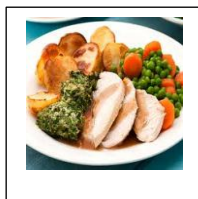


Exciting New Menu

Mrs Sterriker has been taking note of the children's favourite dishes. For the last few weeks of term she will be cooking lunches that the children enjoy (see menu changes). Mrs Sterriker will soon be attending a meeting regarding school lunches, after this she will be doing a new menu that will include meals that are favourites of the children.

Tuesday 22nd March 2016

Lasagne
Broccoli, Green Beans
Garlic Bread
Flapjack



Easter Lunch – 23rd March 2016

Roast Chicken & Stuffing
Carrots, Peas
Roast Potatoes & Gravy
Chocolate Crispie Nest

Thursday 24th March 2016

Sausage in a Bread Bun
Vegetable Sticks
Chips
Easter Cookie



Menu for w/b 7th Feb & 14th Feb

Monday

Macaroni Cheese, Peas, Sweetcorn,
Garlic Bread and Chocolate Brownie

Tuesday

Fish Fingers, Chips, Broccoli,
Carrots, Sliced Wholemeal Bread
and Chocolate Sponge with
Chocolate Sauce

Wednesday

Sausages, Sauté Potatoes, Mixed
Salad, Pitta Bread and Fruit Muffin

Thursday

Chicken Korma, Rice, Green Beans,
Sweetcorn, Naan Bread and
Chocolate

Artic Roll

Friday

Pizza, Diced Potatoes, Veg Stick,
Coleslaw and Chocolate Krispie

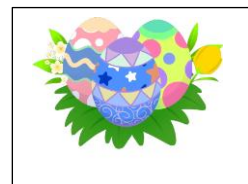
Non-uniform Day

We will be having a Non-Uniform day on Wednesday 23rd March. Please can the children bring a tombola prize into school on this day and leave it in the portacabin before school starts. This will be for the Easter Egg Hunt on Saturday 26th March @ school in the portacabin



Easter crafts Afternoon

On Friday 18th March we will be having an Easter Crafts afternoon. This will start at 1.30pm. All very welcome including pre-school children. Come along and enjoy making a mess!



Our Church School

St Andrew’s Church, Weaverthorpe

The collective worship theme this term is Compassion and Easter.

2016

Thursday 24th March – Easter Service at Church - 2pm

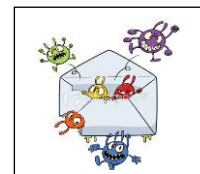
Friday 22nd July – Leavers’ Service at Church - 9.30am

Please find attached an events calendar from Rev Andy Bowden of events coming up in the near future.



Attachments

- Information from Rev Andy Bowden – coming event
- Parents’ Evening Letter
- Easter Egg Hunt Flyer
- World Book Day Voucher
- Wold Valley Youth Flyer



Letters and Information sent home

Please remember to check your children’s bags regularly for letters and information sent home during the week.



School Governors

Chair of Governor/Community
Vice Chair/Community
Foundation Governors

LA Governor
Parent Governors

Staff Governor
Headteacher

Mr Femi Shellard
Mrs Jill Wilson
Mrs Trish Lake
Rev Andy Bowden
Vacancy
Mrs Lucy Bannister
Mr Nick Carnes
Miss Gemma Turner
Miss Janette
Wilkinson

These are our Governors, if you have any worries you can contact any of the above or a Parent Governor who are usually on the playground at the beginning of each school day.

Newsletter Dates

15th April 2016
6th May 2016
10th June 2016
1st July 2016
16th September 2016
7th October 2016
4th November 2016
2nd December 2016

